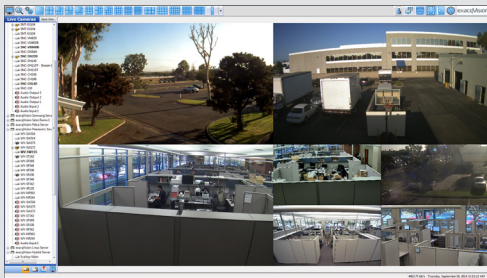
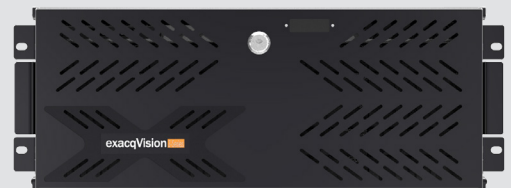
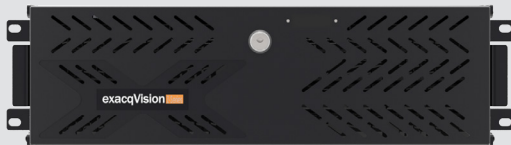
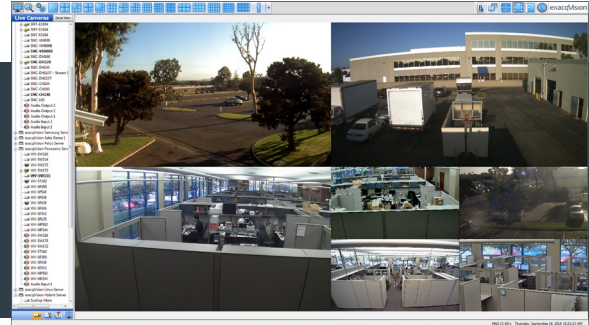


exacqVision Z-Series High Performance, Reliability, Capacity Network Video Recorders



• High Performance

- Continuously records up to 1,200 Mbps of video for high concentration of HD cameras
- Supports many simultaneous video to web/mobile clients with 1,800 FPS video
- Simultaneously connect up to 1,000 remote clients
- Optional dual 10Gbps network interfaces for fast archiving or mass client performance

• High Reliability

- Continuously record during single power source failure with dual power supplies
- Enterprise-class, continuous-duty hard drives
- Uninterrupted operation and video preservation in event of one or two drive failures via RAID 5 or RAID 6
- Hot spare drive options for automatic replacement of failed drive
- Solid-state drive for Linux or Windows operating system
- Monitors hardware health in exacqVision client and with email/text notifications

• High Capacity

- Records up to 128 IP cameras per video recorder
- Includes 8 IP camera licenses
- Compatible with thousands of IP camera models
- Store up to 120TB with front-accessible storage
- Expandable to over 1.6PB with exacqVision S-Series networked storage
- Compatible with all exacqVision recorders and software for maximum scalability

• Powerful VMS Software

- Pre-configured with exacqVision Professional software (standard)
 - EasyConnect - automatically finds, addresses and connects IP cameras
 - Two-way audio
 - Powerful integration with retail, financial and access control systems
 - Conduct investigations on recorded video, audio and data with thumbnail or timeline search
 - Bookmark important video for long-term retention
 - Video multi-streaming to optimize storage utilization and network traffic
- View video anywhere (standard)
 - Unlimited Windows/Linux/Mac PC clients
 - Live and recorded video from any browser
 - Live and recorded video from most tablets and smartphones
- Upgrade to exacqVision Enterprise software (optional)
 - VideoPush to remotely control video wall clients
 - Case management to organize critical evidence
 - Active Directory/LDAP for IT administration of users
 - Easy, single-screen administration of cameras, users, storage and notifications
- Enterprise System Manager (optional)
 - Maximize uptime with health monitoring

• Host Certified Software Applications (CSA)

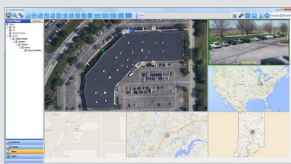
- Install CSAs such as video analytics, access control and POS software on the recorder
- Tested by Exacq to ensure compatibility
- Save money and rack space with single security server

• 3-Year Warranty

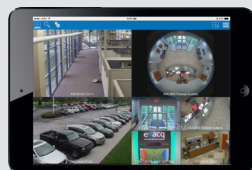
- Includes a 3-year hardware warranty and technical support from one source
- Receive constantly increasing VMS functionality with 3 years of unlimited software updates included

SETTINGS	2U SERVER	3U SERVER	4U SERVER
Maximum IP Cameras	128	128	128
Included IP Licenses	8	8	8
Alarm Inputs	4	8	8
Alarm Outputs	1 TTL & 1 Relay	3 TTL & 1 Relay	3 TTL & 1 Relay
SERVER			
Pre-Loaded VMS Software	Professional (standard), Enterprise (optional)	Professional (standard), Enterprise (optional)	Professional (standard), Enterprise (optional)
Typical Video Storage Rate (Mbps)	400 Mbps (Windows) 800 Mbps (Linux)	600 Mbps (Windows) 1000 Mbps (Linux)	800 Mbps (Windows) 1200 Mbps (Linux)
Local Client Display Rate (FPS)	1800 Mbps (Windows) 1200 Mbps (Linux)	1800 (Windows) 1200 (Linux)	1800 (Windows) 1200 (Linux)
Maximum Hard Drives	8	16	20
Maximum Storage	48 TB RAID 5	96 TB RAID 6	120 TB RAID 6
Monitor Output	1 DVI-I + 1 HDMI + 1 DisplayPort, max 2 simultaneous monitors	1 DVI-I + 1 HDMI + 1 DisplayPort, max 2 simultaneous monitors	1 DVI-I + 1 HDMI + 1 DisplayPort, max 2 simultaneous monitors
Operating System	Windows 7 64-bit, Windows 2012 (Optional) Ubuntu Linux 14.04	Windows 7 64-bit, Windows 2012 (Optional) Ubuntu Linux 14.04	Windows 7 64-bit, Windows 2012 (Optional) Ubuntu Linux 14.04
CPU	Gen 4 Intel Core i7 Gen 4 Intel Xeon E3 (Optional)	Gen 4 Intel Core i7 Gen 4 Intel Xeon E3 (Optional)	Gen 4 Intel Core i7 Gen 4 Intel Xeon E3 (Optional)
RAM	8 GB, 16 GB (optional)	8 GB, 16 GB (optional)	8 GB, 16 GB (optional)
NIC	2 x 1 Gbps, 2x10 Gbps SPF+ (Optional)	2 x 1 Gbps, 2x10 Gbps SPF+ (Optional)	2 x 1 Gbps, 2x10 Gbps SPF+ (Optional)
USB	8 (2 front, 6 rear)	8 (2 front, 6 rear)	8 (2 front, 6 rear)
DVD	Included	Included	Included
Serial	1 RS485	1 RS485	1 RS485
Audio Outputs	1	1	1
Keyboard & Mouse	Included	Included	Included
GENERAL			
Dimensions	27" x 16.875" x 3.5" 68.6 x 42.9 x 8.9 cm	26.5" x 16.875" x 5.5" 67.4 x 42.9 x 17.8 cm	27 x 16.875" x 7" 68.6 x 42.9 x 17.8 cm
Weight	39 - 53 lbs. 17.7 - 24.1 kg	44 - 72 lbs. 20 - 32.7 kg	49 - 90 lbs. 22.3 - 40.9 kg
Regulatory	CE, FCC, cULus, UL Listed	CE, FCC, cULus, UL Listed	CE, FCC, cULus, UL Listed
Power Supplies	Dual Hot Swap	Dual Hot Swap	Dual Hot Swap
Operating Temperature	40° - 95° F 4.5° - 35° C	40° - 95° F 4.5° - 35° C	40° - 95° F 4.5° - 35° C

Related Products



exacqVision VMS Software



Exacq Mobile App



exacqVision S-Series
Storage Device



exacqVision Surveillance
Keyboard

www.exacq.com