

Overview

The exacqVision Client software has three operating modes: Live, Search, and Config (Setup). To access the desired operating mode, click on the appropriate icon displayed on the left side of the tool bar.



Live Mode allows users to view live video and perform simple exacqReplay searches.



Search Mode allows users to perform simple or comprehensive searches of recorded video.



Config (Setup) Mode allows Administrators and Power Users to configure systems.

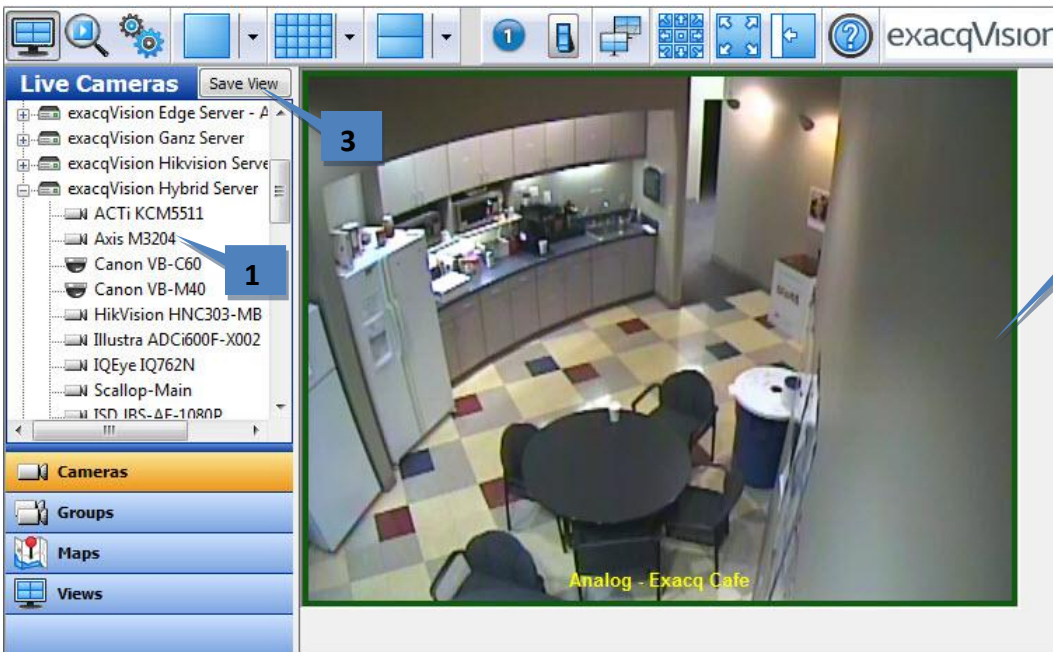
This document covers the most common features of both the Live and Search operating modes.

Basic Live Mode Features

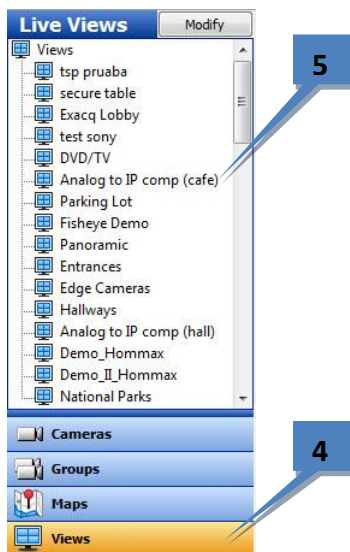
You can easily view cameras in the layout that is best suited for your needs. Simply click on one of the blue camera view icons at the top of the screen while in Live Mode. (The number of views available varies depending on your system's resolution.)



Drag and drop the desired cameras from the camera tree on the left side (1) of the screen to the Video Panel (2). You can replace the video in a panel by dragging a new camera in from the camera tree or from another panel. Note that you can drag and drop cameras from any networked exacqVision server that you can connect to, regardless of where it is located.



When you've finished creating a layout, you can save it as a view that you quickly access later. Just click on the Save View button (3) at the top left of the Live Cameras tree. A pop-up window then allows you to name and save the view; click Apply when finished.



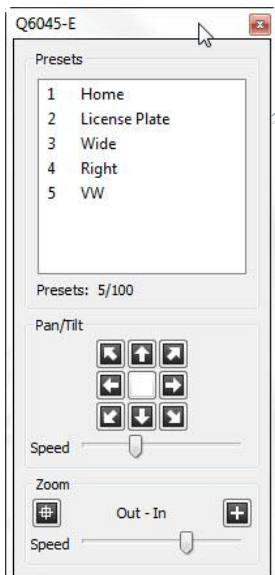
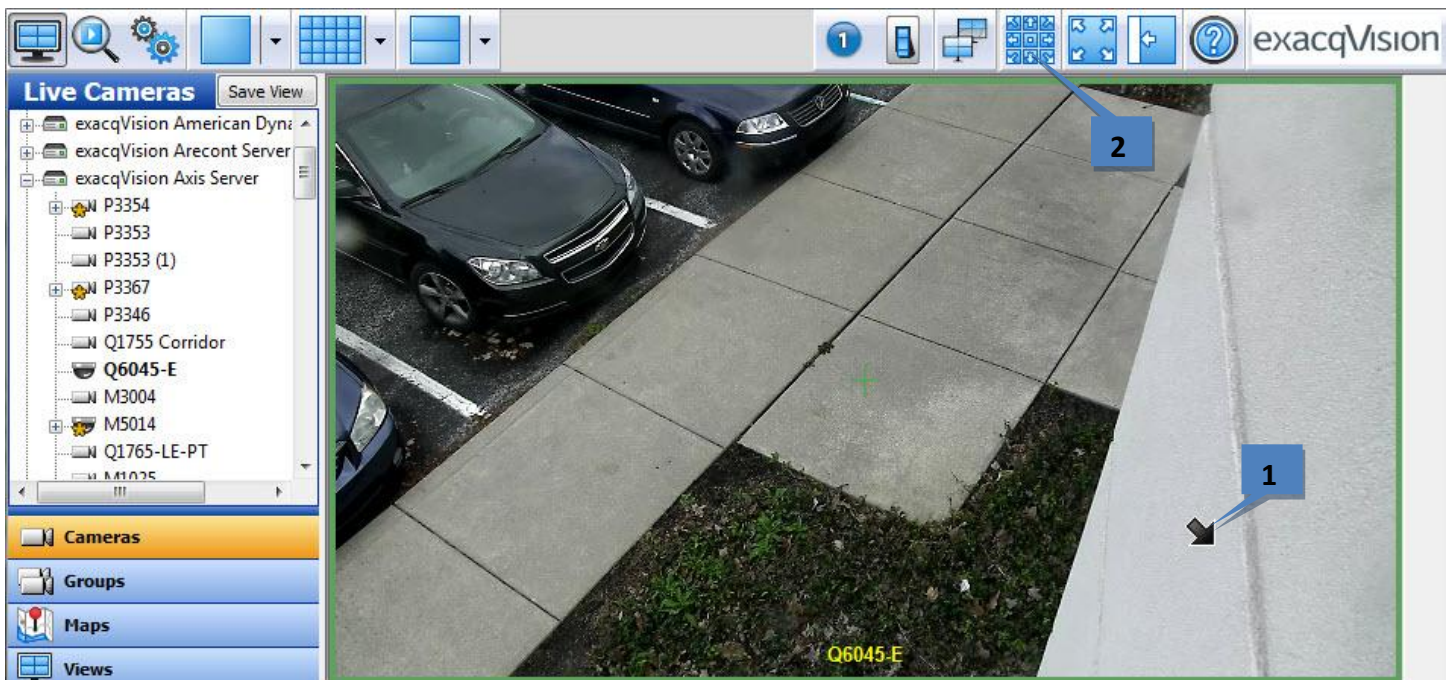
To open a saved view, click on the Views button (4) at the bottom left of the Live Cameras tree and then select the appropriate view from the list (5).

Quick Single Camera (1x1) View

You can switch to the single camera mode (or 1x1 mode) for any camera in your view by double-clicking on any of the live video panels in Live Mode. After you are finished viewing the single camera, just double-click on the image again and you will return to the previous view.

PTZ Control

1. If you roll your mouse over the video from a PTZ camera, the arrow cursor becomes a cross cursor or directional arrow. The cross allows you to zoom in and out using the scroll wheel on your mouse or by using the Page Up (zoom in) or Page Down (zoom out) keys on your keyboard. The directional arrows allow you to pan or tilt the camera in the same direction as the arrow by clicking on the mouse button (you can also use the arrows on your keyboard to pan and tilt the camera).
2. Alternatively, you can click the PTZ controls launch button to open the PTZ Controls window.
3. The PTZ Controls also allow you to call presets, pan/tilt/zoom, and change how fast the cameras moves and zooms.



Digital PTZ

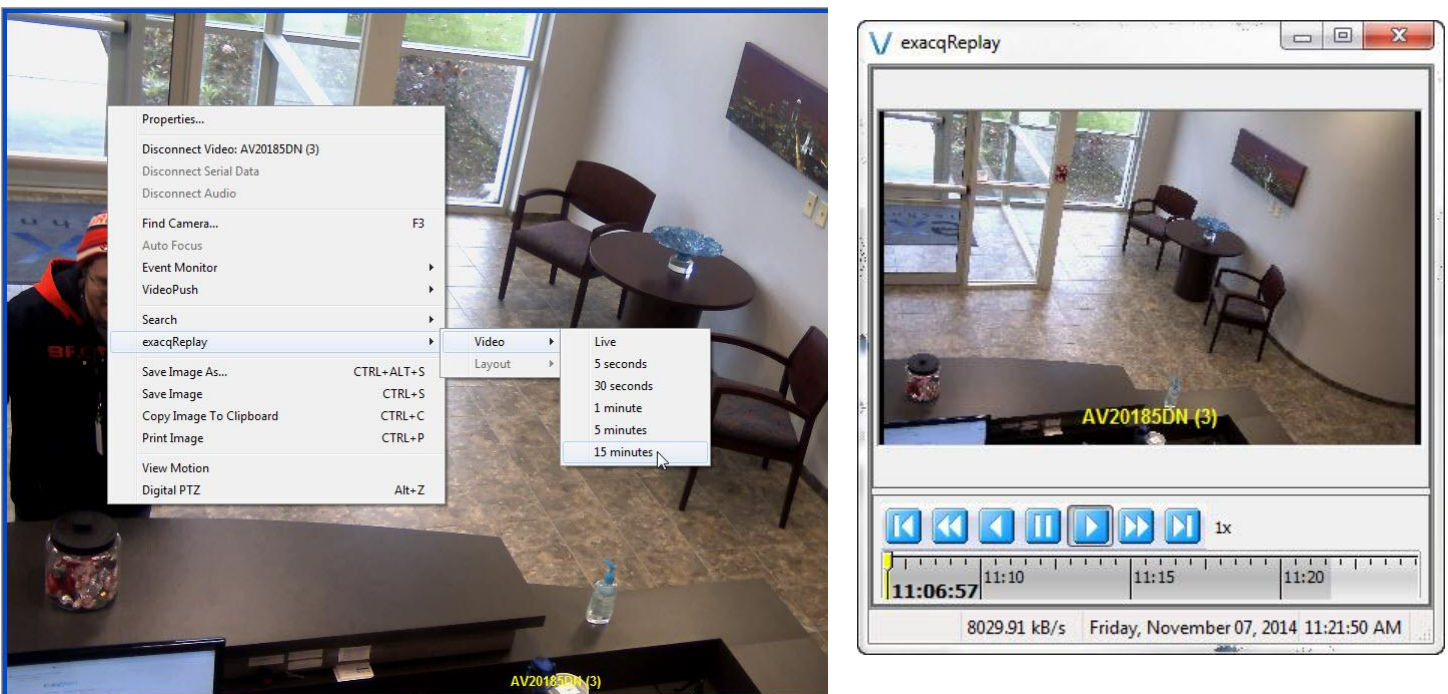
Any camera can function like a PTZ camera if you activate the Digital PTZ option. Right-click anywhere in the live video panel and choose the Digital PTZ option from the menu (or simply press Alt+Z on your keyboard). Now you can use PTZ controls on this camera just as you would with an actual PTZ camera. Note that when you zoom and move the image via Digital PTZ you are not changing what is being recorded; the entire image is always recorded.



After you have enabled the Digital PTZ option on a camera, you can quickly zoom in on a rectangular area of the image by holding down the Ctrl button on your keyboard. The cross cursor or arrow cursor becomes a magnifying glass cursor (1). Click anywhere in the panel and hold down the mouse button while drawing a box (2) around the area where you want to zoom (this feature works only when Digital PTZ is enabled). To turn the Digital PTZ feature off, right-click the video window and select Digital PTZ again (or press Alt+Z).

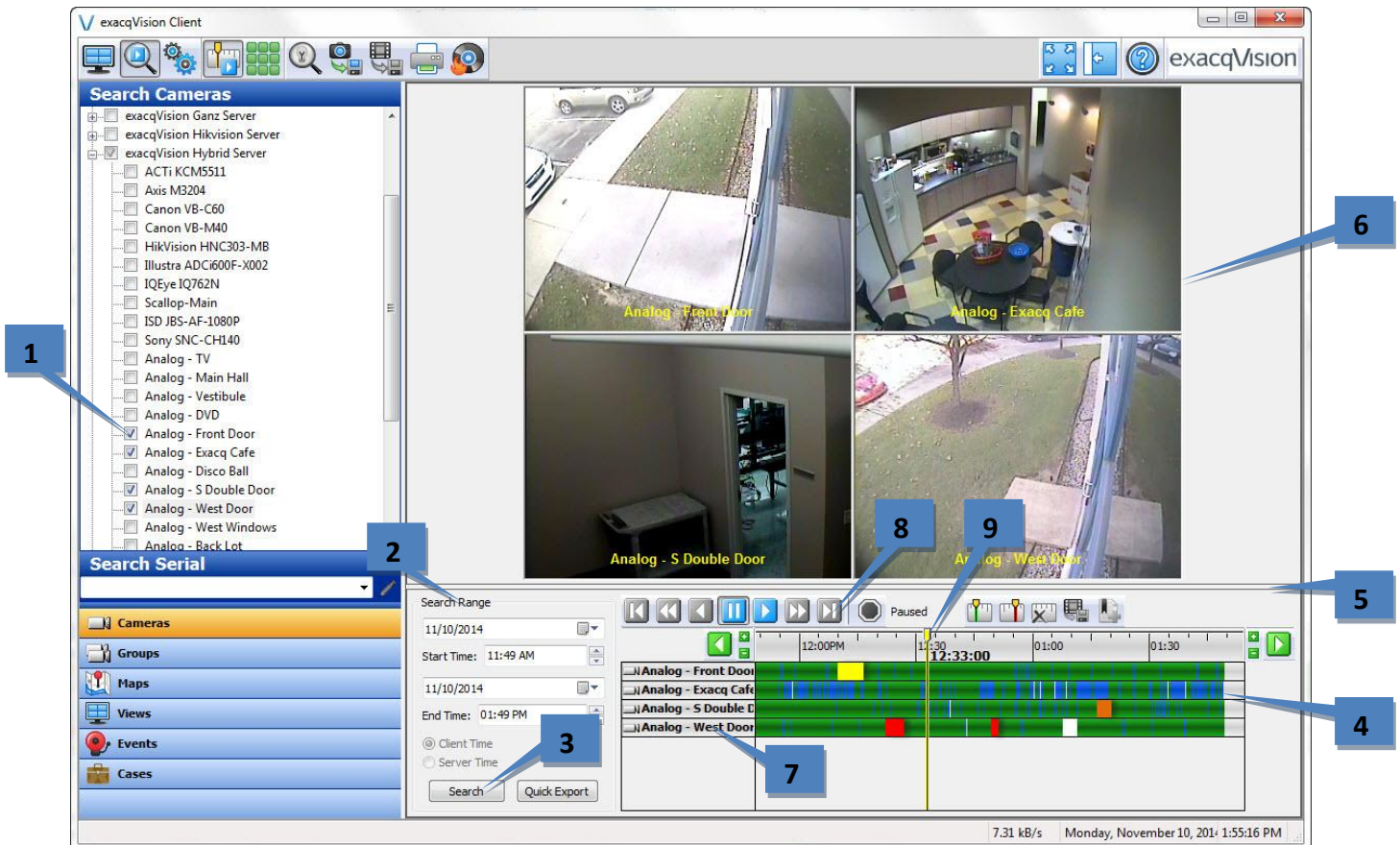
exacqReplay

You don't have to leave the Live Mode to perform a simple search on one of the cameras in your current view. Simply right-click anywhere on the video image and choose exacqReplay from the pop-up menu. Then select the current video window or all windows in the current layout, and then the amount of recorded video you want to view (up to 15 minutes).

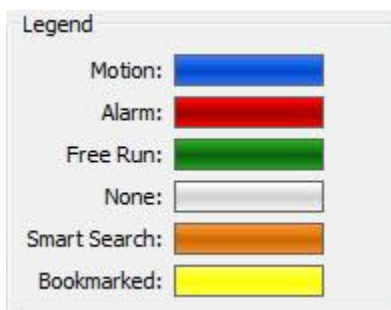


Basic Search Mode Features

1. To begin a search for video or data, select one or more cameras or devices using the checkboxes in the Search Camera tree. To quickly select all the cameras on a server, click the box before the name of the server.
2. Select the desired start and end time and date using the Search calendar
3. Click the Search button.

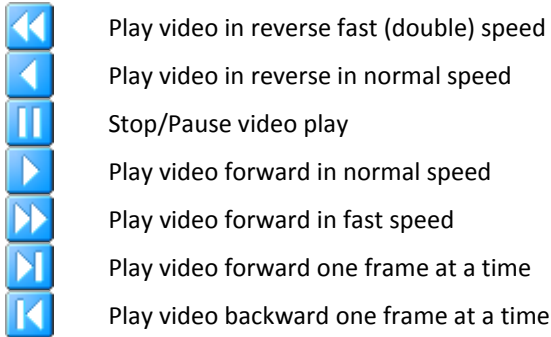


4. A timeline then appears at the bottom of the screen. Recorded data will be represented by bars of different colors in the timeline.
5. The legend, which is visible if you drag up the horizontal bar, indicates the types of video recorded:



NOTE: If you notice intermittent, equally spaced areas of green video bars, the camera is probably configured to record in Time Lapse mode.

6. You can view recorded video for one or multiple cameras in the Video Playback window. To view video from a single camera, double-click on the blue, red or green indicator on the timeline. The recorded video then loads and playback begins.
7. To play back video from multiple cameras simultaneously, hold down the Ctrl or Shift key as you select the camera names on the left of the timeline. When you have selected all the desired cameras, double-click the blue, red or green indicator on the timeline that corresponds to the time you wish to view.
8. After the video has downloaded, you can reverse, fast forward, or pause the video using the Video Playback controls.



9. You can also move forward and backwards in the video by using the scrub or slider controls located just in the timeline. Move the slider back and forth to “scrub” through video.

NOTE: The digital PTZ function can be used in Search Mode just as it is in Live Mode. Right-click in any of the video panels and select Digital PTZ. You can now access the PTZ controls or use the keyboard shortcuts described earlier. This does NOT modify the recorded video.

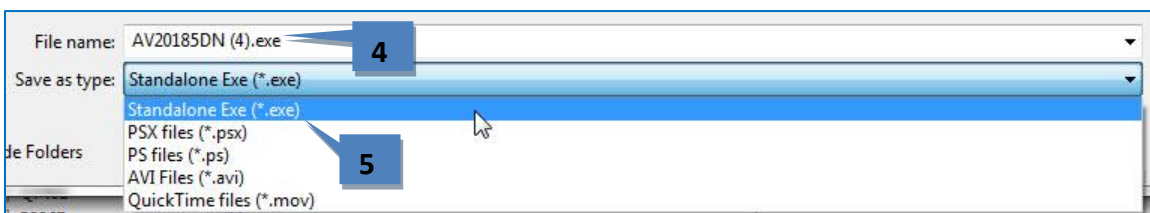
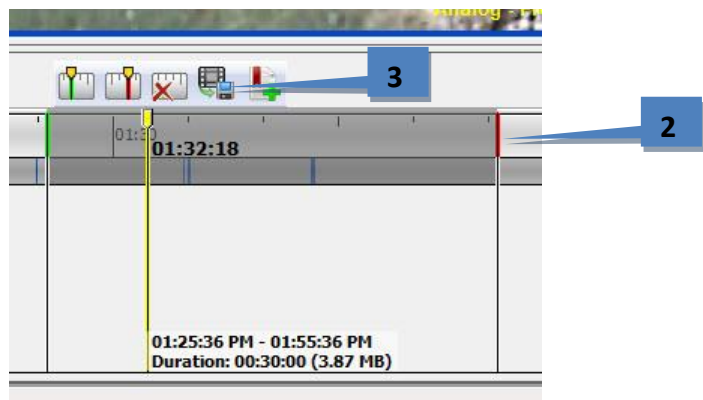
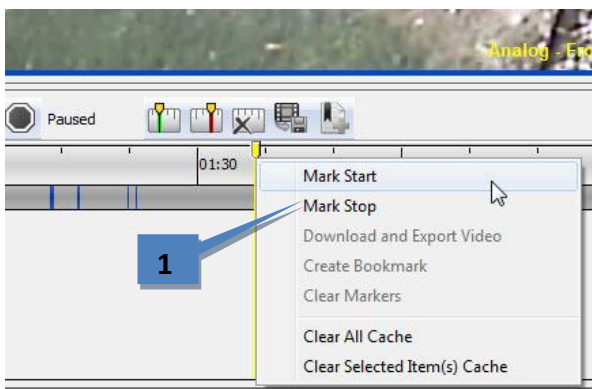
Exporting Video

The Export buttons allow you to save a picture or video, print a picture, or save files to a CD or DVD (including DVD+R and DVD+RW). Left to right, the icons are Save Picture, Save Video, Print Picture, and Burn Saved Files to CD or DVD:



To export video from up to 16 cameras, or from a single camera on exacqVision Start, perform a video search and complete the following steps:

1. Locate the start of the video clip. Right-click the timeline (or right-click the video window) and select Mark Start or Mark Stop from the pop-up menu.
2. A default export range is displayed, with the green marker indicating the start of the export clip and a red marker indicating the end of the export clip. You can slide the start and end markers earlier or later as desired.
3. Click the Export Video button.
4. In the Export Video window, select a file name and location.
5. Select a file type.
6. Click Save (not shown).



You can export using the following file types:

- An EXE file can be launched in its own player and run by a user who does not have access to exacqVision Client.
- A PSX file is a packaged .ps file that can be run with a simple double-click.
- An AVI or MOV file allows you to email it to another exacqVision Client user. (If you are running the client on a Linux or Mac operating system, you should save the clip as a PSX file unless you are emailing it to a Windows user.)